

**U0110M(G) • U0121M(G) • U0141M(G) • U0141TM(G)****PRODUCT DESCRIPTION**

The **dataloggers** are designed for measuring and recording physical and electric quantities with an adjustable logging interval from 1 second to 24 hours. The measured values (instantaneous or the average, minimum and maximum values detected during the recording interval) are stored in the internal non-volatile memory. The data logging mode can be cyclic (when the data memory is completely full, the oldest data are overwritten by the new ones), or non-cyclic (the recording will stop once the memory is full). For each measured value it is possible to set two alarm limits. The alarms are signalled by the symbols on the LCD display, by flashing the LED, by acoustic or by sending a warning SMS or JSON message. The data recording can be performed continuously or only when an alarm occurs.

The **dataloggers** of the **UxxxxM family** contain a 2G (GSM) radio modem, dataloggers of the **UxxxxG family** contain a combined 2G/4G (GSM and LTE) modem. Using the modem, the device connects to the mobile operator's network after inserting a suitable SIM card. Modem is used to send SMS messages to up to four selected recipients and to send the measured values using JSON messages, e.g. to the COMET Cloud (optionally to your own storage). In addition to alarm warning messages, SMS messages containing current measured values and alarm statuses can be sent at regular intervals.

**Device setting, data downloading and online monitoring** are carried out using the computer with the **COMET Vision** software installed (see [www.cometsystem.com](http://www.cometsystem.com)). The USB interface is used to communicate with the computer.

The **datalogger is powered** by an internal **Li-Ion battery**. The device includes a charging circuit, which is activated automatically when a standard USB charger is connected or after connecting a device to a computer. The charging takes place if the battery condition requires it and the internal temperature of the device is in the range 0 and 40 °C. Fast charge mode can be run by turning off the device.

Device type	Measured values	Construction
<b>U0110M(G)</b>	Ti	Internal temperature sensor
<b>U0121M(G)</b>	2 x Te + Tdiff + 1 x cc	Connectors for two external Pt1000/E probe connection
<b>U0141M(G)</b>	4 x Te + 2 x cc	Connectors for up to four external Pt1000/E probe connection
<b>U0141TM(G)</b>	4 x Te + 2 x cc	Two part WAGO terminal block for up to four external Pt1000/0 wire leads probe connection

Ti ... Internal temperature, Te ... External temperature, Tdiff ... temperature difference

cc... calculated channel, ie the channel that can be used to calculate and record the value calculated from the measured quantities according to the selected formula

**INSTALLATION AND OPERATION**

**Insert the micro-SIM card into the device** (see other side of this sheet). Use a card with parameters conforming to the expected number of sent SMS messages and amount of received and transmitted data. If the SIM card is protected by PIN code, make a note of it, and later insert this code into the device configuration. Proceed with care and avoid contact of the external conductive parts with the electronics of the device (the datalogger is constantly supplied from the internal battery). An optional accessory is a prepaid IoT SIM card (order code **LP105**) for sending data to the COMET Cloud. Please note that this card does not support the sending of SMS messages. The **UxxxxMsim** and **UxxxxGsim** kits with built-in IoT SIM card (e.g. U0141Msim) allows the instant connection to the COMET Cloud.

**Fasten the device** on the wall with two screws or insert it into the wall holder **LP100** (optional accessory). Datalogger may be operated as a portable one. In this kind of operation avoid the device falling down. Try to maintain the proper working position.

- The dataloggers always install vertically (with the antenna facing up) into locations with sufficient mobile operator signal quality. Insufficient signal level can be in reinforced concrete buildings, metal chambers and other shielded areas.
- Connect the probes to the device (maximum length of cables should not exceed 30 m, recommended maximum cable length of the Pt1000 probes is 15 m). To connect Pt1000/0 probes with wire leads (U0141TM and U0141TG) use the supplied tool SP013 or a suitable screwdriver.
- The devices with all cables should be located as far as possible from potential interference sources

**Set-up the device**

- Connect the datalogger with attached probes to the computer. Use an USB cable with USB-C connector (max. cable length 3 m).
- Run the installed **COMET Vision** software and select the device you want to set up from the device list
- Click on the **Configuration** button. The device configuration will be downloaded and you can change the setup of individual items.
- Finally save the new configuration into the device (**Apply changes**)

The **devices do not require** special maintenance. We recommend checking the state of the battery (charge as needed) and regularly verifying the accuracy of measurements with calibration.

**SAFETY INSTRUCTIONS**

- Read carefully the **Safety information for dataloggers with modem** before operating the device and observe it during use!
- Installation, electrical connection and commissioning should only be performed by qualified personnel in accordance with applicable regulations and standards
- Devices contain electronic components, it needs to liquidate them according to currently valid conditions.
- **To complement the information in this data sheet** read the manuals and other documentation, which are available in the **Download** section for a particular device at [www.cometsystem.com](http://www.cometsystem.com)

## Technical specifications

Device type	U0110M(G)	U0121M(G)	U0141M(G)	U0141TM(G)
Power batteries	Li-Ion accu pack 5200 mAh			
Recording interval	(1 - 2 - 5 - 10 - 15 - 30) s • (1 - 2 - 5 - 10 - 15 - 30) min. • (1 - 2 - 3 - 4 - 6 - 8 - 12 - 24) h			
Memory capacity	500 000 values in non-cyclic record mode • 350 000 values in cyclic record mode			
Internal temperature measuring range	-20 to +60°C	—	—	—
Accuracy of internal temperature measurement	± 0.4°C	—	—	—
External temperature measuring range	—	-200 to +260°C	-200 to +260°C	-200 to +260°C
Accuracy of external temperature measurement in the range of -200 to +100°C	—	± 0.2°C	± 0.2°C	± 0.2°C
Accuracy of external temperature measurement in the range of +100 to +260°C	—	± 0,2% of measured value	± 0,2% of measured value	± 0,2% of measured value
Recommended calibration interval	2 years	2 years	2 years	2 years
Protection class - case with electronics / T+RH sensor	IP67	IP67	IP67	IP20
Temperature operating range	-20 to +60°C	-20 to +60°C	-20 to +60°C	-20 to +60°C
Relative humidity operating range (without condensation)	0 to 100%RH	0 to 100%RH	0 to 100%RH	0 to 100%RH
Recommended storage temperature range	-20 to +45°C	-20 to +45°C	-20 to +45°C	-20 to +45°C
Recommended storage humidity range (without condensation)	5 to 90%RH	5 to 90%RH	5 to 90%RH	5 to 90%RH
Electromagnetic compatibility according to	ETSI EN 301 489-1	ETSI EN 301 489-1	ETSI EN 301 489-1	ETSI EN 301 489-1
Weight	260 g	270 g	270 g	270 g

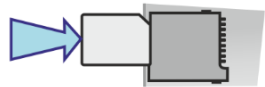
### SIM card installation

Use the micro SIM card or nano SIM card with adapter

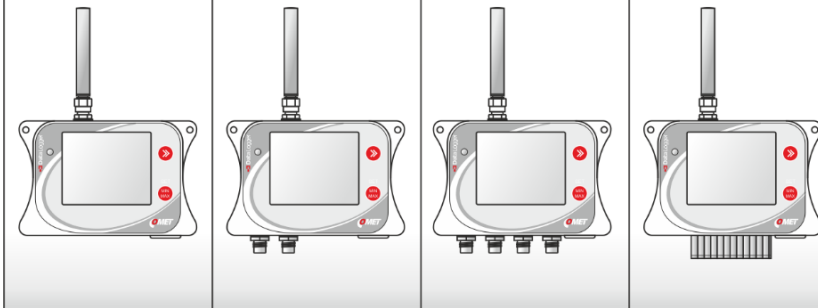
Turn off the device

Unscrew the rear cover of the device (use the TORX T10 key)

Insert the SIM card into the holder

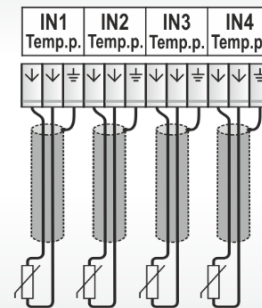


Screw up the rear cover of the device  
 • check the seal in the nut for integrity  
 • tighten screws gradually and with feeling



### U0141TM(G) - probe connection

SP013  
 tool for WAGO  
 connector



### Dimensions

