



# Firmware update

## EBI IF 100 / 150 / 200 / 300 / 400

## EBI 300 / 310

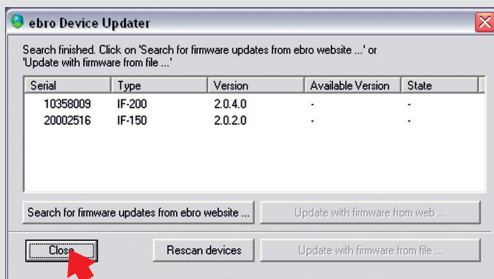
**-ebro-**  
a xylem brand

- 1 Start the firmware updater directly or via your software (e.g. Winlog.pro or Winlog.med).

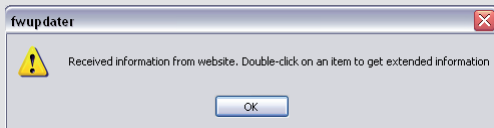
## There are two possibilities to update the firmware:

### Via Internet

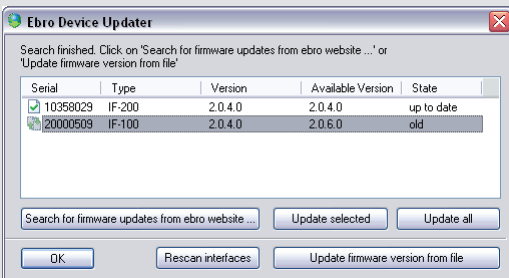
- 2 All connected devices will be listed.



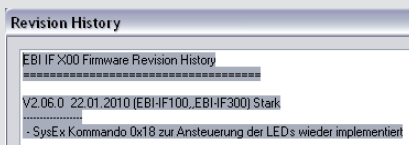
- 1 Click on „Search for firmware updates from ebro website ...“ to search for the latest firmware versions.



- 2 Confirm by clicking on OK.
- 3 You will be informed whether you are working with the latest firmware version.



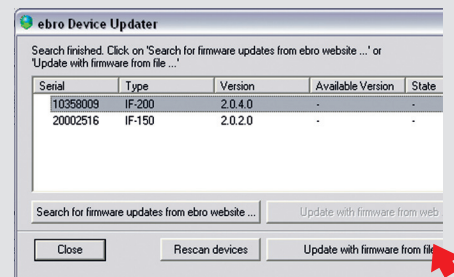
- 4 Double-clicking on the respective device will display further information about the current firmware version.



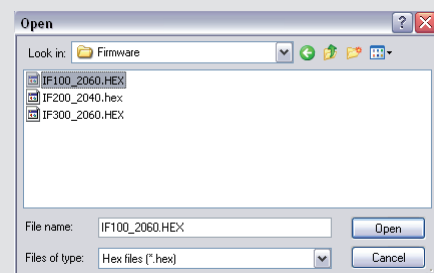
- 5 Select the device which you would like to have updated.
- 6 Click on „Update with firmware from web“.

### Via File

- 2 A window will open where all the connected devices will be shown.



- 1 Select the device which you would like to have updated.
- 2 Click on „Update firmware from file“. A new window will open automatically.



- 3 Select the right file and click on „Open“.



# Firmware update

## EBI IF 100 / 150 / 200 / 300 / 400

## EBI 300 / 310

**-ebro-**  
a xylem brand

### Internet / File

3

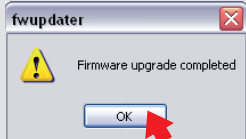
A dialog informs you about the progress of the firmware update.

**!** During update process you should not start any other activities on your PC or unplug the device!

4

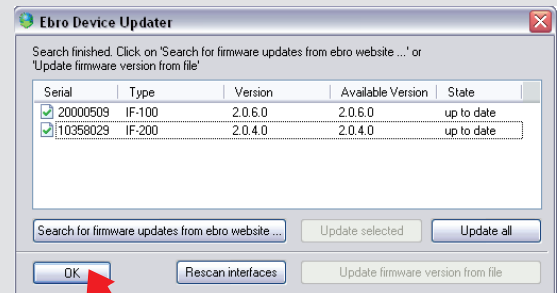
As soon as the update is finished, a new window will open automatically.

Click on OK to finish the firmware update.

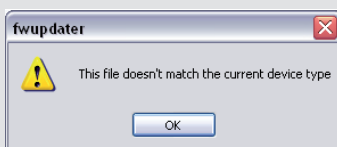


5

The update has been completed successfully. on „OK“ to close the window.



## Possible Error Messages

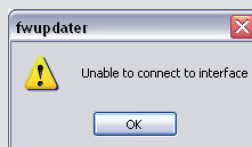


#### Possible cause:

The firmware does not match the interface.

#### Bugfixing:

Select matching device and firmware and re-start the update.

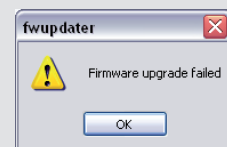


#### Possible cause:

You have worked with the PC during the update.

#### Bugfixing:

Disconnect and then re-connect the device.



#### Possible cause:

You have worked on the PC during the update.

#### Bugfixing:

Disconnect and then re-connect the device. Re-start the updater.