

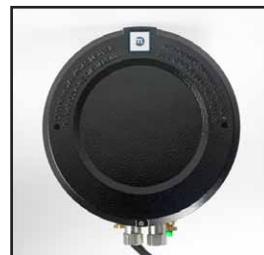
# XTP601 Quick Start Guide



GP1



GP2



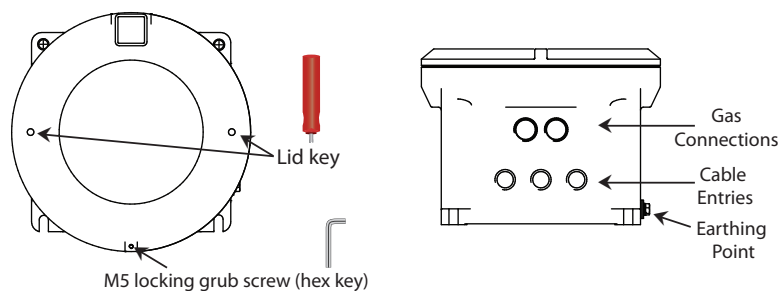
GP3



**WARNING: This unit is 24 V DC powered only!**

Please read the manual before commencing work on this product and refer to Section 4 for installation instructions.

- Mount the analyzer before attempting to remove the lid.
- The thread is greased and therefore it may be advisable to wear latex gloves.
- Ensure that the grub screw is loose, using the hex key (supplied), to prevent scoring on the casing.
- Remove the lid, using the lid keys (supplied). The lid will require a firm grip to loosen.



**Figure 1** XTP601 Cable Entries

- If fitted, remove the display / status pcb via the two ¼ turn quick-connect fittings.
- Disconnect the ribbon / interconnecting cable from the loose pcb.



**WARNING: Prior to connecting power, ensure the unit is correctly earthed via the earth point on the right hand side of the case.**

The instrument is now ready to connect to the power and outputs.



**NOTE: The unit is supplied with three cable entries (refer to Figure 1) that may be specified with Shipping Caps only – these are not suitable for use in the field. It is the user's responsibility to ensure the appropriate cable glands, conduit or blanking plugs are fitted. These items can be supplied by Michell Instruments.**

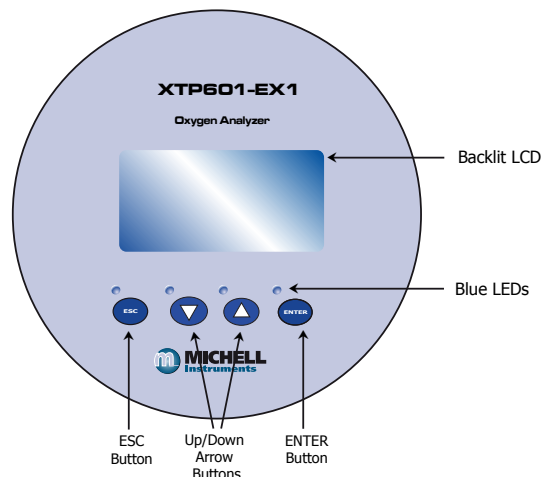
- After making all necessary connections, reconnect the pcb via the ribbon / interconnecting cable and quick-connect fittings and replace the lid, ensuring at least seven full turns on the thread to complete the gas path.
- Use the hex key (supplied) to tighten the grub screw.

# XTP601 Quick Start Guide

## Warm Up

Once power is applied, the unit will require up to 30 minutes to warm up, plus a further 15 minutes to stabilize. There will be a warming symbol visible in the top right hand corner of the screen (on the display version) until the analyzer is ready for use.

## Accessing the Menu to Check Settings (for Display Version only)



- Press the **ENTER** button from the Main Page to access the Passcode Page.
- **The User Passcode is 1919**
- Use the Up (▲) and Down (▼) buttons and press **ENTER** after each value.
- View or change settings (refer to user manual for complete menu structure).

## Setting the Internal Clock

From the User Menu Page scroll down to the CLOCK menu and press the **ENTER** button. Check that the date and time match the clock on the plant control system. If not, set these via the display, or the Application Software.

## Calibration Check

Zero & Span gases will be required at this point to perform a calibration check. These will be dependent on the range of the analyzer. Please refer to the Test Result Sheet, supplied with each analyzer.

- Pass the Zero gas through the unit, leaving at least five minutes to stabilize. Make a note of the value.
- Pass the Span gas through the unit, leaving at least five minutes to stabilize. Make a note of the value.
- If the readings are within the stated tolerance of the gas cylinder, the analyzer is ready to use.
- If the readings are not correct, proceed to Section 3 of the manual for calibration instructions.

## Final Checks

Check/adjust all the settings (Alarms, mA Outputs, External Inputs, High Speed Response (HSR) and HMI), to match the site requirements.